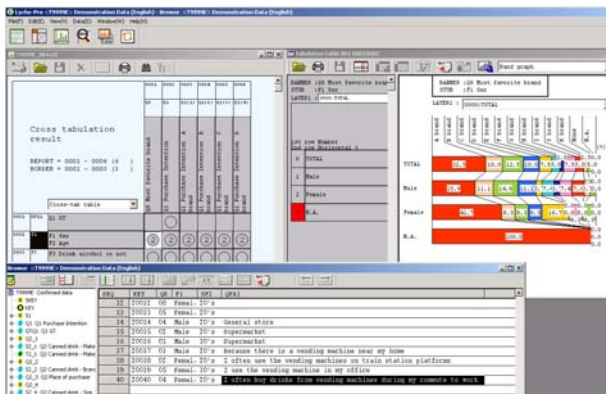


# INTAGE's Proprietary Tabulation Software

## Lyche-Pro

Lyche-Pro accelerates the utilization of research data by supporting simple and cross tabulations, re-processing of question items, various significance tests, and a search function for analyzing open-ended answers with simple operation.

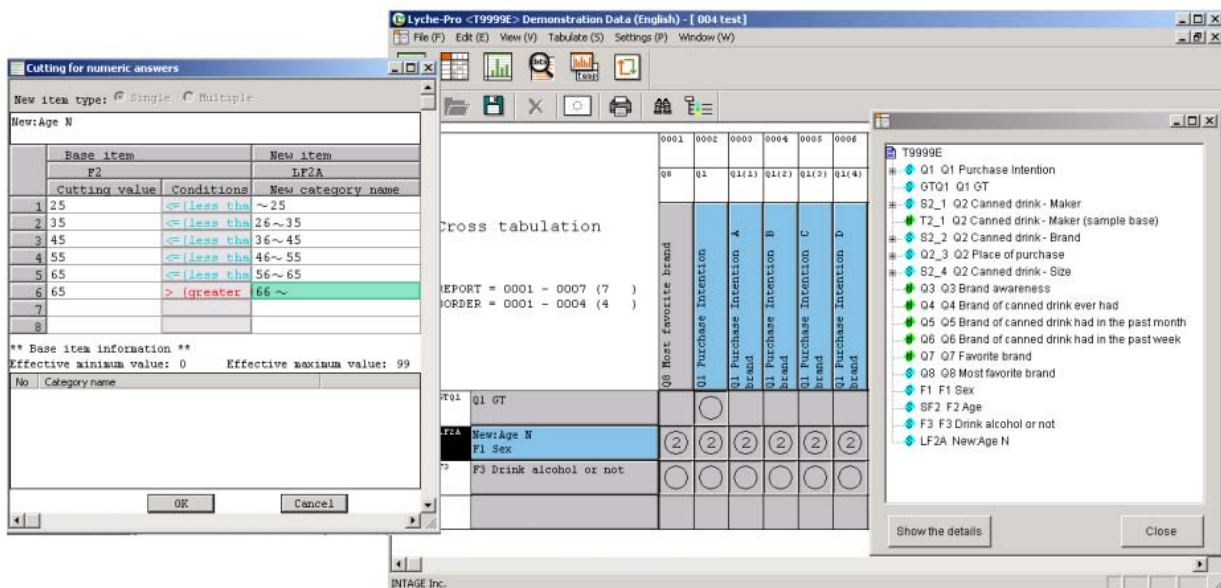


### Main Features

- Simple and cross tabulations
- Graph generation
- Various significance tests
- Re-processing of question items (e.g. re-categorization)
- Browse and output of raw data and open-ended answers
- Uniform management of research data

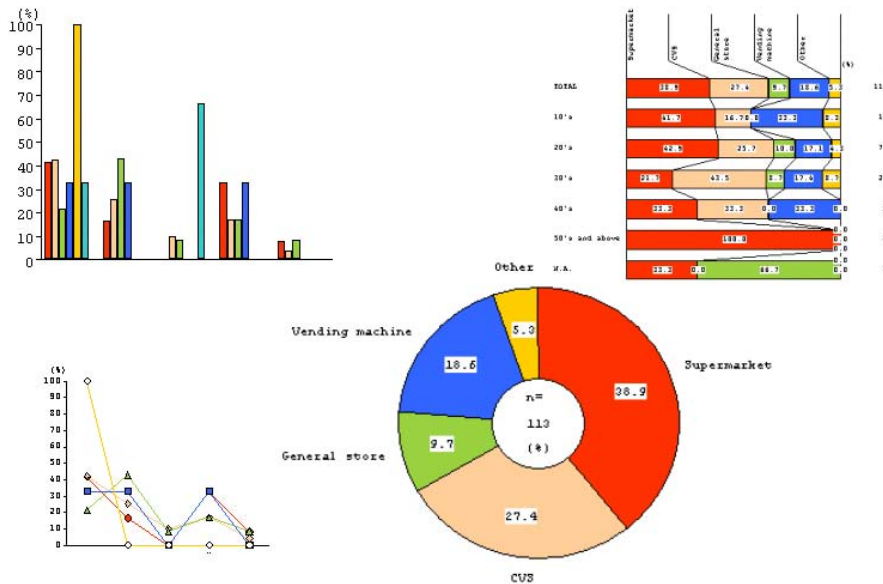
## Flexible Cross Tabulation

Capable of multiple-layer cross tabulation, up to five layers, as well as search refinement to specific respondents. Furthermore, the function allows users to re-process question items and re-tabulate those for more complex analyses.



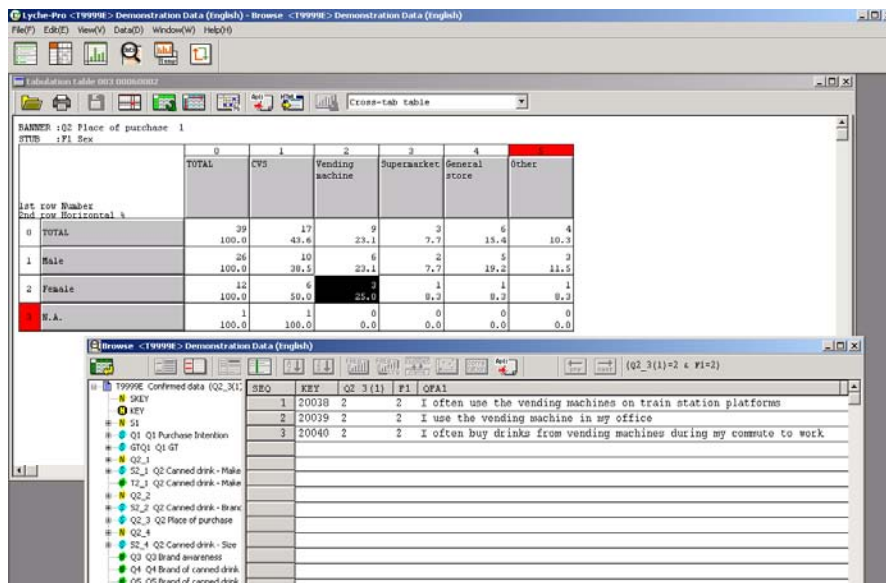
# Simple Graph Generation and Statistical Testing

It is easy to create various types of graphs from tabulation results, and also easy to conduct various tests such as tests of ratio difference, tests of means, and difference and contingency table tests.



# Deep Analysis by Linking Cross Tabulation with Open-ended Answers

Lyche-Pro can not only handle cross tabulation drilling down to specific respondents, but can also display answers to open-ended questions corresponding to a cell selected on a spreadsheet. The function acts as a powerful driver for exploratory data analyses and deepening understanding of research results.



Should you have any questions on Lyche-Pro, please contact our sales representatives or send an E-mail to [lyche@intage.co.jp](mailto:lyche@intage.co.jp)